

# FERNANDINA HARBOR NASSAU COUNTY, FLORIDA PROJECT CONDITION SURVEY FY20 28, 35 & 36-FOOT PROJECT

### SURVEY NOTES

- REFER TO SURVEY NO. 20-130.
- DEPTHS DEPICTED BY THIS SURVEY ARE REFERENCED TO MLLW, TIDAL EPOCH 1983-2001 AS REPORTED BY THE NATIONAL OCEANIC AND ATMOSPHERIC ADMINISTRATION (NOAA). NOAA'S VDATUM MODEL WAS USED AND CALIBRATED TO THE PUBLISHED MLLW HEIGHTS OF THE BENCHMARKS ASSOCIATED WITH THE TIDE GAUGE SITES SPECIFIED BELOW:  
  
NOAA TIDAL STATION 872-0030, FERNANDINA BEACH, AMELIA RIVER, FL
- TIDAL REDUCTIONS WERE OBTAINED UTILIZING A REAL-TIME KINEMATIC (RTK) GPS AND REFERENCED TO MLLW UTILIZING A HYPACK KINEMATIC TIDE DATUM (KT) MODEL, KTD FILE NAME IS: "CAMDENG-NASSAU-DUVAL-STJOHNS-FLAGLER\_20191202.KTD".
- ALL ELEVATIONS ARE BELOW THE CHART DATUM UNLESS PRECEDED BY A (+) SIGN.
- PLANE COORDINATES ARE BASED ON THE TRANSVERSE MERCATOR PROJECTION FOR THE EAST ZONE OF FLORIDA AND REFERENCED TO NORTH AMERICAN DATUM OF 1983 (NAD83).
- ALL STATIONING REFERS TO THE CENTERLINE OF THE CHANNEL.
- THIS SURVEY WAS PERFORMED USING REAL-TIME KINEMATIC (RTK) GPS POSITIONING WITH THE FOLLOWING REFERENCE BASE LOCATION:  
  
REFERENCE BASE LOCATED AT "BATH HOUSE ARP" (OPUS PID: BBC808) FOR CUTS 1 & 2  
REFERENCE BASE LOCATED AT "RICHARD E BONNER" (OPUS PID: BBCK39) FOR CUTS 3-10  
TIDE STAFF WAS SET ON THE SOUTH END OF THE CONSOLIDATED FUEL DOCK, NORTH OF FERNANDINA MUNICIPAL MARINA FROM "RICHARD E BONNER" (PID: BBCK39)
- VERTICAL MEASUREMENTS WERE MADE USING A RESON MODEL T20P MULTI-BEAM SYSTEM OPERATING AT 400 KHZ AND A ROSS SMART SOUNDER MODEL 835C WITH A DUAL-FREQUENCY SOUNDER WITH A 28/200 KHZ SINGLE-BEAM TRANSDUCER. ALL SOUNDINGS SHOWN ARE IN HIGH FREQUENCY (400 KHZ).
- AIDS TO NAVIGATION WERE LOCATED DURING THIS SURVEY.
- THE INFORMATION DEPICTED ON THIS MAP REPRESENTS THE RESULTS OF SURVEYS MADE ON THE DATES INDICATED ABOVE AND CAN ONLY BE CONSIDERED AS INDICATING THE GENERAL CONDITIONS AT THAT TIME. THIS CHART IS SOLELY FOR THE DISTRIBUTION OF AVAILABLE DEPTHS AT THE TIME OF THE SURVEY.
- SURVEY ACCURACY PERFORMANCE STANDARDS, QUALITY CONTROL, AND QUALITY ASSURANCE REQUIREMENTS WERE FOLLOWED DURING THIS SURVEY IN ACCORDANCE WITH USACE EM 1110-2-1003, HYDROGRAPHIC SURVEYING, 30 NOV 2013 AND EM 1110-2-6056, STANDARDS AND PROCEDURES FOR REFERENCING PROJECT ELEVATION GRADES TO NATIONWIDE VERTICAL DATUMS, 31 DEC 2010.

VESSEL	DATE OF SURVEY	AREA SURVEYED
SB-36	10 MAR 2020	TURNING BASIN, CUTS 5 & 6
SB-36	11 MAR 2020	CUTS 5 THRU 7, TURNING BASIN
SB-36	12 MAR 2020	CUTS 1 THRU 4
SB-36	13 MAR 2020	CUTS 8 THRU 10

LEGEND	
	MONUMENT
	LIGHTED BEACON
	GREEN DAY BEACON
	RED DAY BEACON
	RED LIGHTED BUOY
	GREEN LIGHTED BUOY
	CAN BUOY
	NUN BUOY
	TIDE STAFF
	PROJECT DEPTH

US Army Corps of Engineers  
Jacksonville District

SAFETY ON THIS JOB  
DEPENDS ON YOU

DEPARTMENT OF THE ARMY  
JACKSONVILLE DISTRICT, CORPS OF ENGINEERS  
JACKSONVILLE, FLORIDA

Checked By: GHR  
Designed By: WRM  
Drawn By: WRM  
File No.: 20-130-AS-36-35-28-01  
Date: MAR 2020

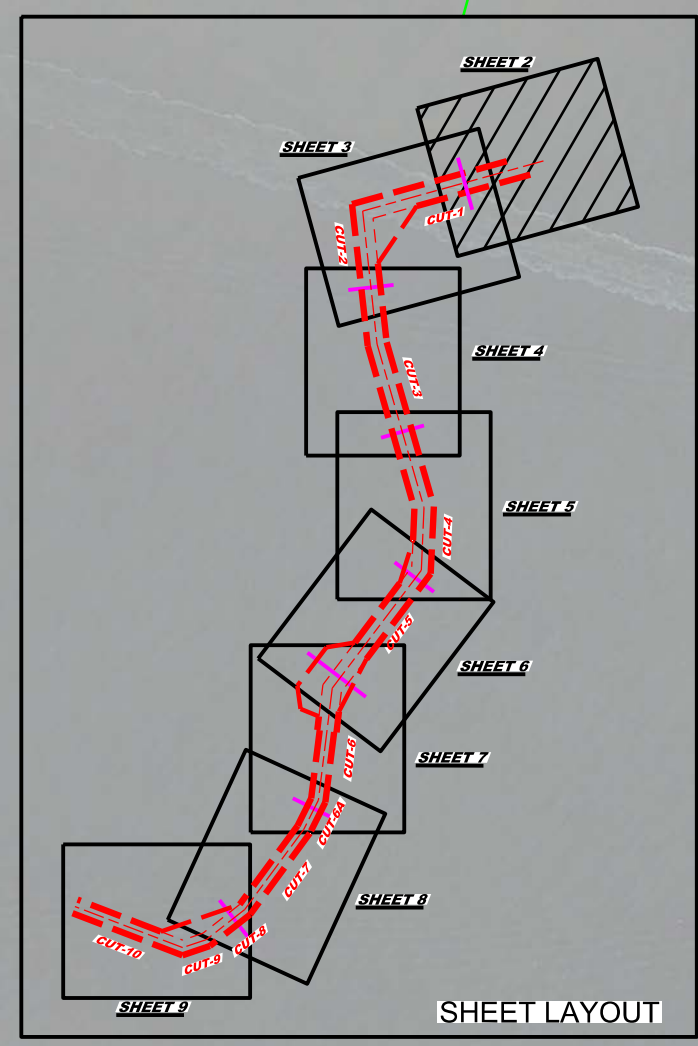
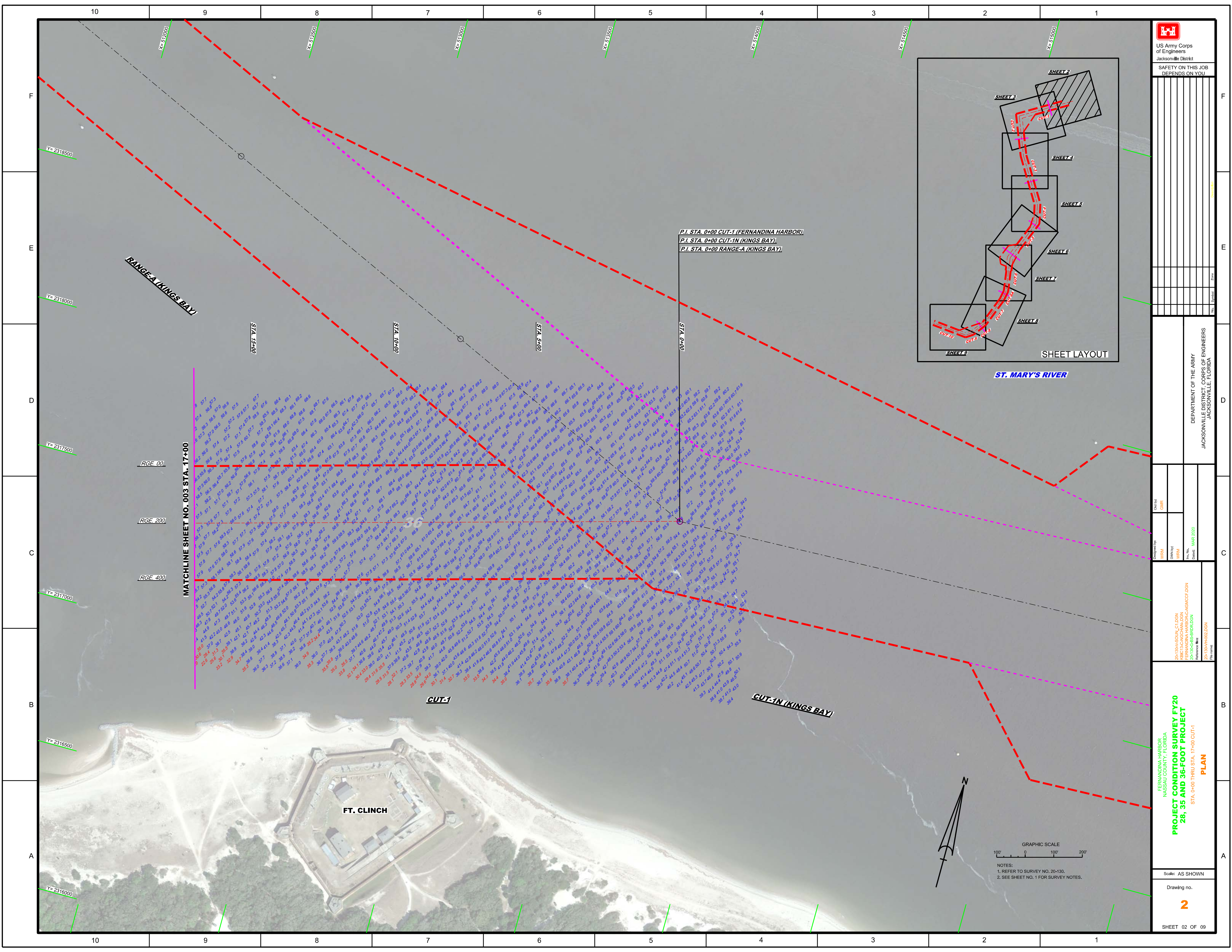
20-130-INDEX.DGN  
20-130-35-36-35-28-01.DGN  
20-130-36-35-36-35-28-01.DGN  
Reference files: 20-130-100-1.DGN

FERNANDINA HARBOR  
NASSAU COUNTY, FLORIDA  
**PROJECT CONDITION SURVEY FY20  
28, 35 AND 36-FOOT PROJECT**  
INDEX, LOCATION AND VICINITY  
MAP

Scale: AS SHOWN

Drawing no.  
**1**

SHEET 01 OF 09



P.I. STA. 0+00 CUT-1 (FERNANDINA HARBOR)  
P.I. STA. 0+00 CUT-1N (KINGS BAY)  
P.I. STA. 0+00 RANGE-A (KINGS BAY)

MATCHLINE SHEET NO. 003 STA. 17+00


RGE. 00  
RGE. 200  
RGE. 400

FT. CLINCH

CUT-1

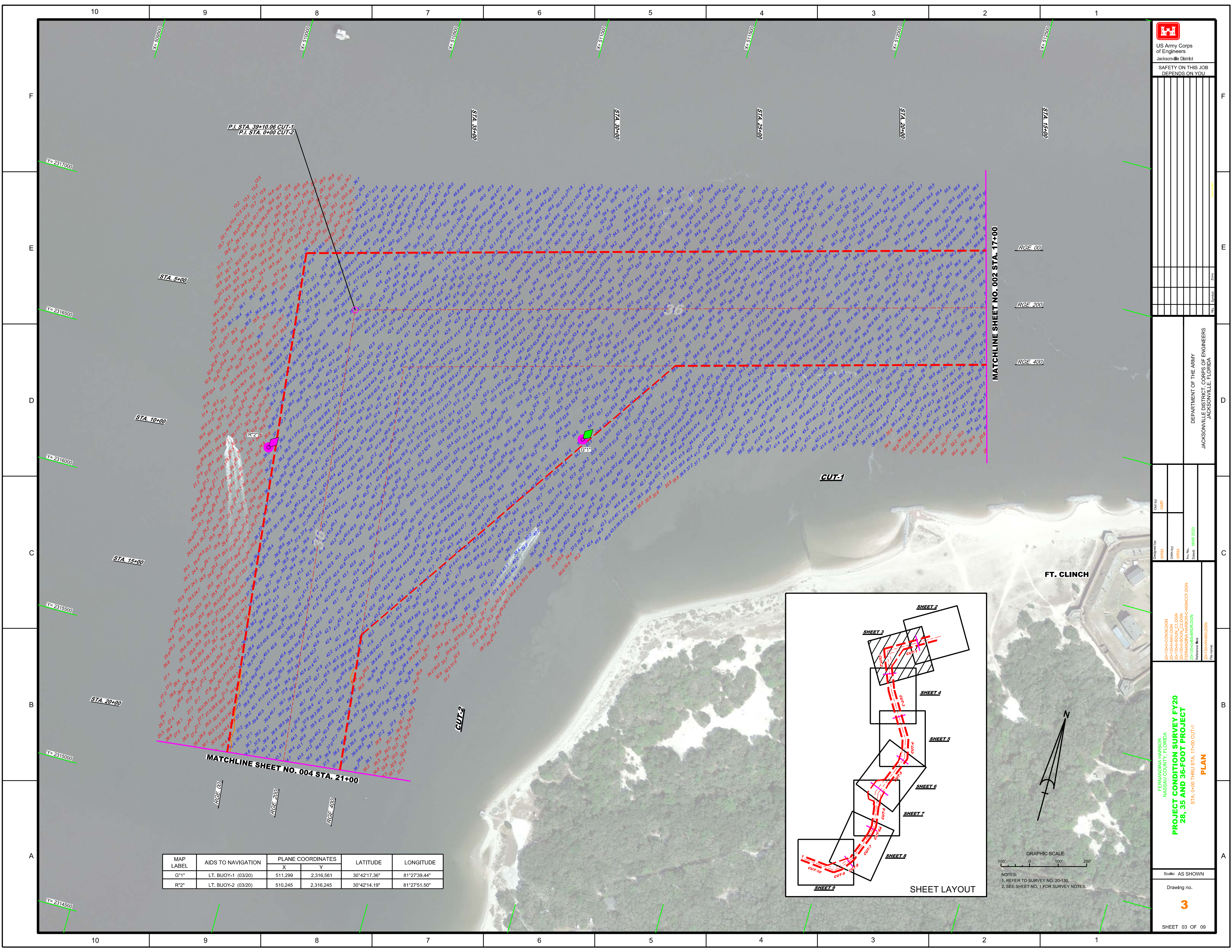
CUT-IN (KINGS BAY)

GRAPHIC SCALE  
100' 0 100' 200'  
NOTES:  
1. REFER TO SURVEY NO. 20-130.  
2. SEE SHEET NO. 1 FOR SURVEY NOTES.



US Army Corps of Engineers  
Jacksonville District  
SAFETY ON THIS JOB  
DEPENDS ON YOU

DEPARTMENT OF THE ARMY JACKSONVILLE DISTRICT, CORPS OF ENGINEERS JACKSONVILLE, FLORIDA	Drawn by: GHR Checked by: GHR Date: MAR 2020
PROJECT CONDITION SURVEY FY20 28, 35 AND 36-FOOT PROJECT STA. 0+00 THRU STA. 17+00 CUT-1 <b>PLAN</b>	SHEET 02 OF 09



P.I. STA. 39+10.06 CUT-1  
P.I. STA. 0+00 CUT-2

STA. 5+00

STA. 10+00

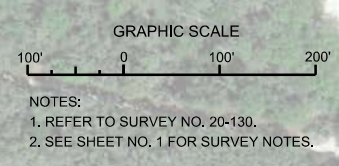
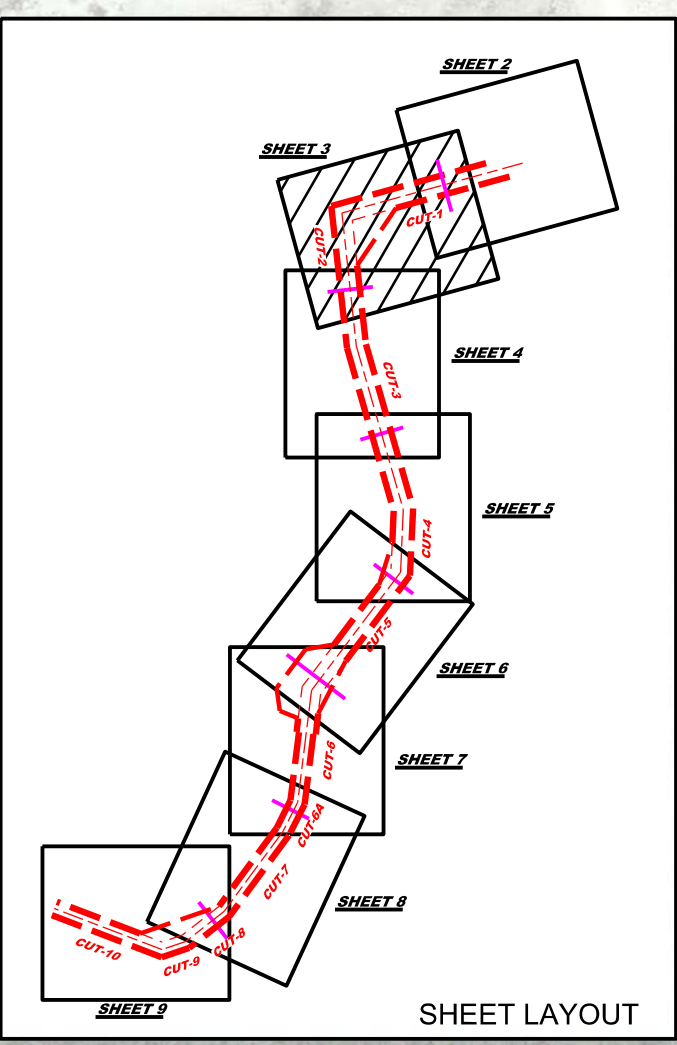
STA. 15+00

STA. 20+00

MATCHLINE SHEET NO. 004 STA. 21+00

MATCHLINE SHEET NO. 002 STA. 17+00

MAP LABEL	AIDS TO NAVIGATION	PLANE COORDINATES		LATITUDE	LONGITUDE
		X	Y		
G*1	LT. BUOY-1 (03/20)	511,299	2,316,561	30°42'17.36"	81°27'39.44"
R*2	LT. BUOY-2 (03/20)	510,245	2,316,245	30°42'14.19"	81°27'51.50"



US Army Corps of Engineers  
Jacksonville District  
SAFETY ON THIS JOB DEPENDS ON YOU

Checked by:	GHM
Designed by:	WRM
Drawn by:	WRM
File No.:	20-130-000-03
Date:	MAR 2020

DEPARTMENT OF THE ARMY  
JACKSONVILLE DISTRICT, CORPS OF ENGINEERS  
JACKSONVILLE, FLORIDA

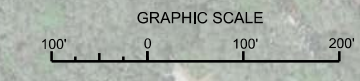
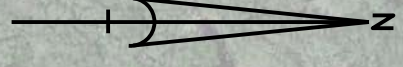
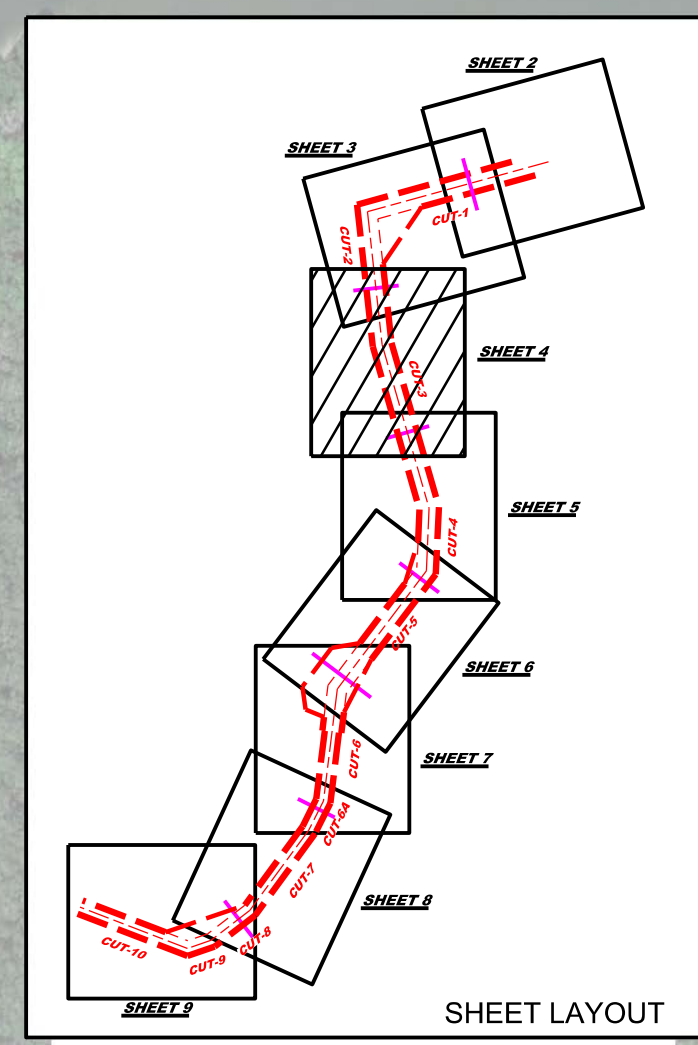
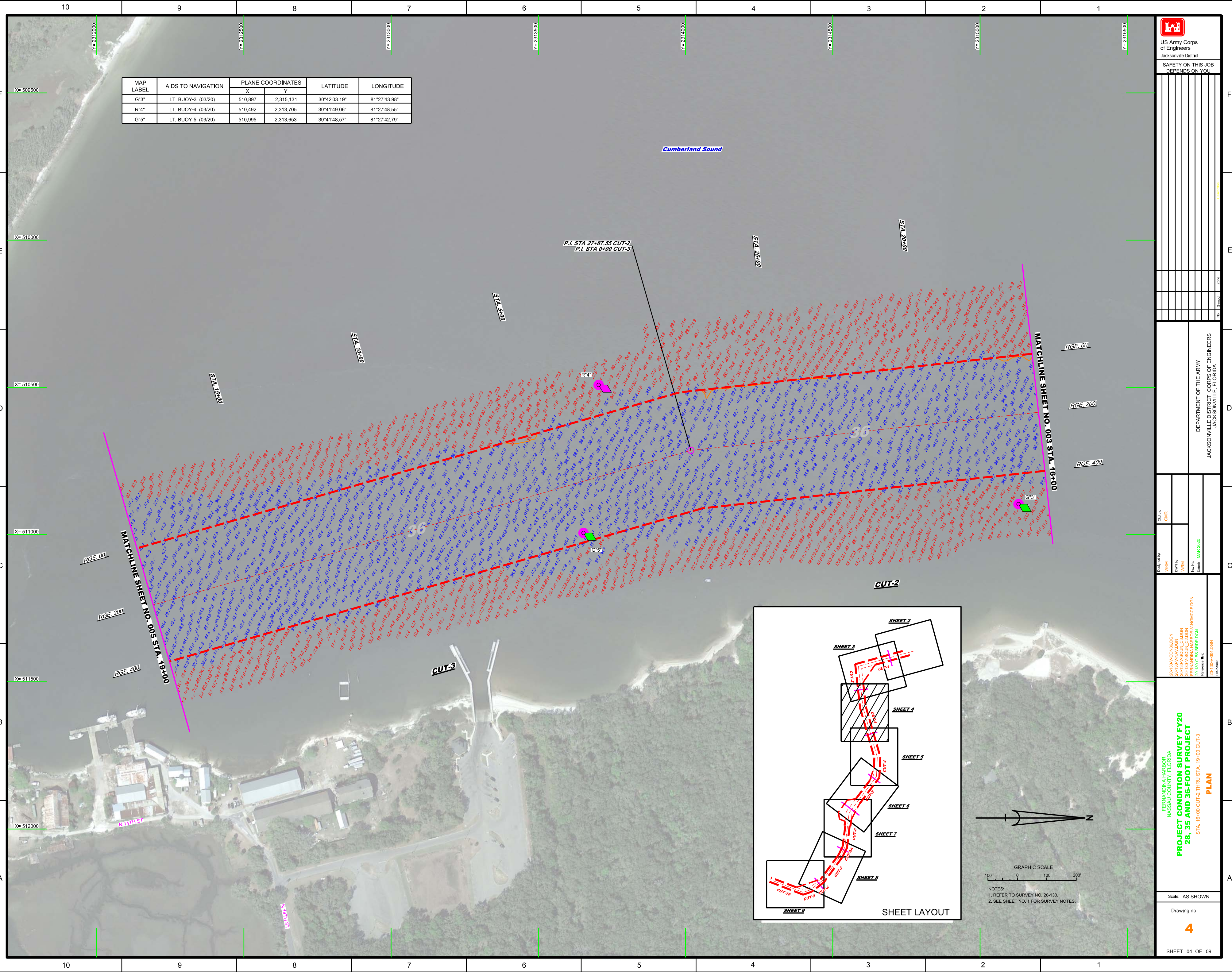
FERNANDINA HARBOR  
NASSAU COUNTY, FLORIDA  
**PROJECT CONDITION SURVEY FY20**  
28, 35 AND 36-FOOT PROJECT  
STA. 0+00 THRU STA. 17+00 CUT-1  
**PLAN**

Scale: AS SHOWN

Drawing no. **3**

SHEET 03 OF 09

MAP LABEL	AIDS TO NAVIGATION	PLANE COORDINATES		LATITUDE	LONGITUDE
		X	Y		
G*3"	LT. BUOY-3 (03/20)	510,897	2,315,131	30°42'03.19"	81°27'43.98"
R*4"	LT. BUOY-4 (03/20)	510,492	2,313,705	30°41'49.06"	81°27'48.55"
G*5"	LT. BUOY-5 (03/20)	510,995	2,313,653	30°41'48.57"	81°27'42.79"

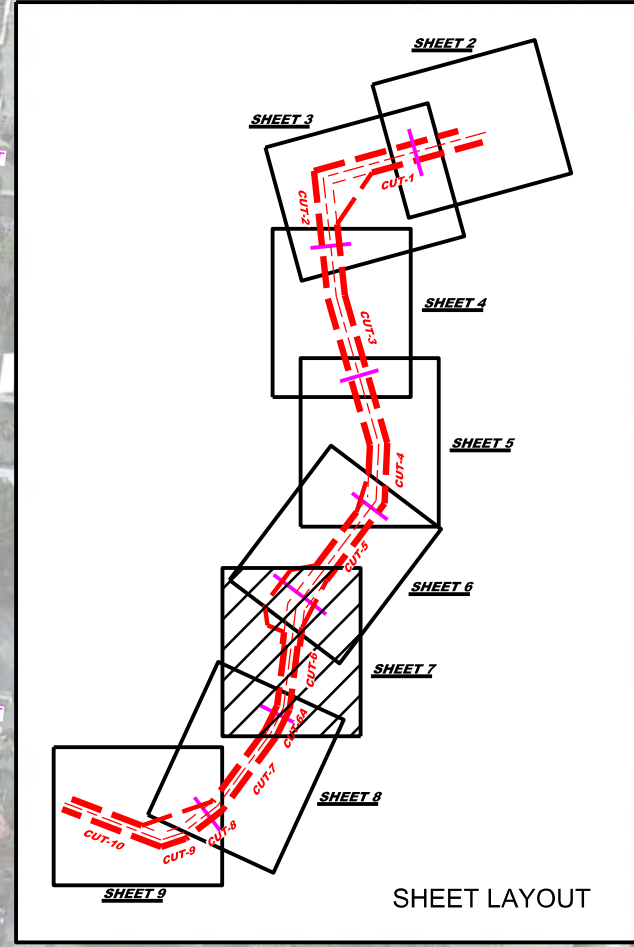
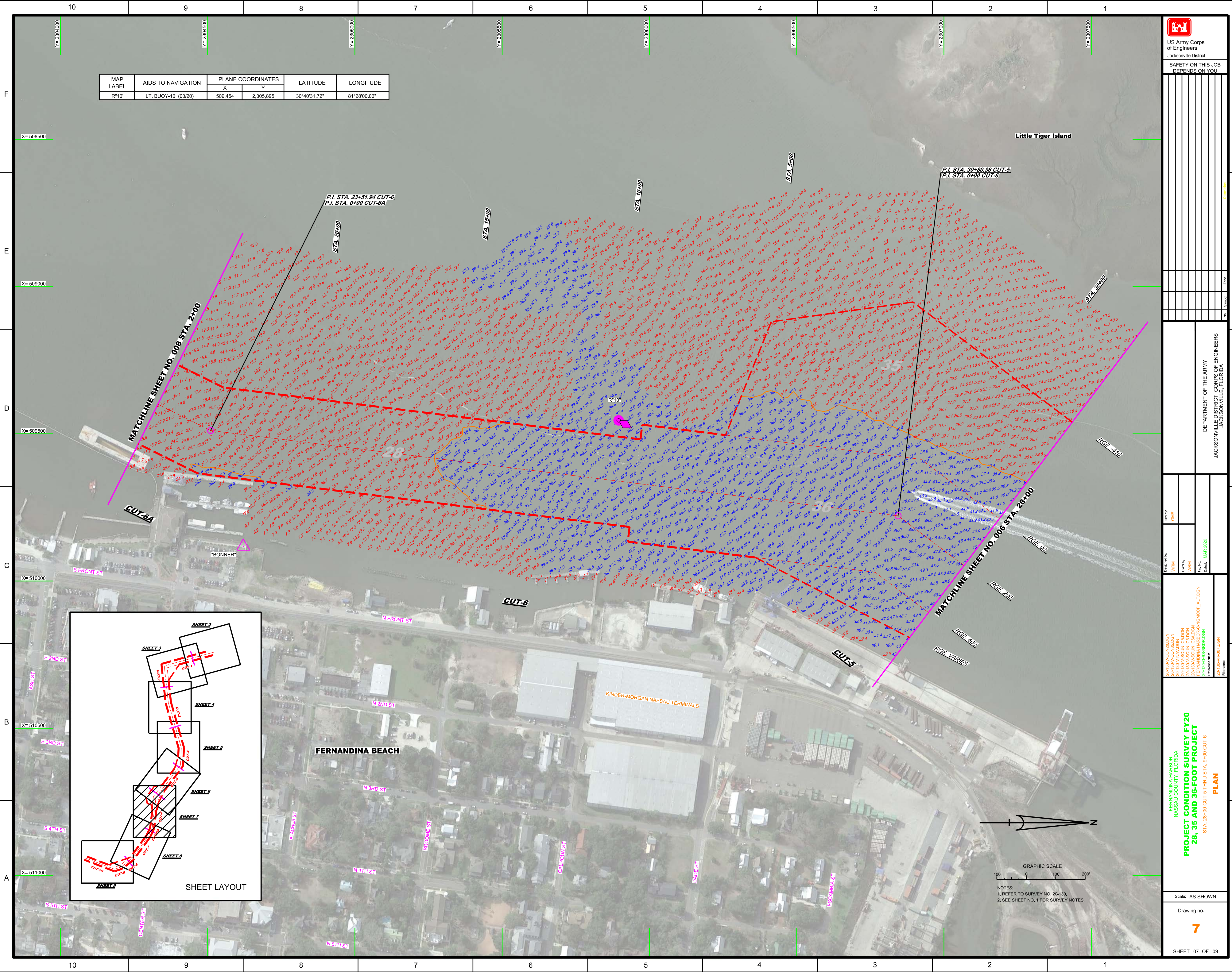


NOTES:  
1. REFER TO SURVEY NO. 20-130.  
2. SEE SHEET NO. 1 FOR SURVEY NOTES.





MAP LABEL	AIDS TO NAVIGATION	PLANE COORDINATES		LATITUDE	LONGITUDE
		X	Y		
R110	LT. BUOY-10 (G3/20)	509,454	2,305,895	30°40'31.72"	81°28'00.06"



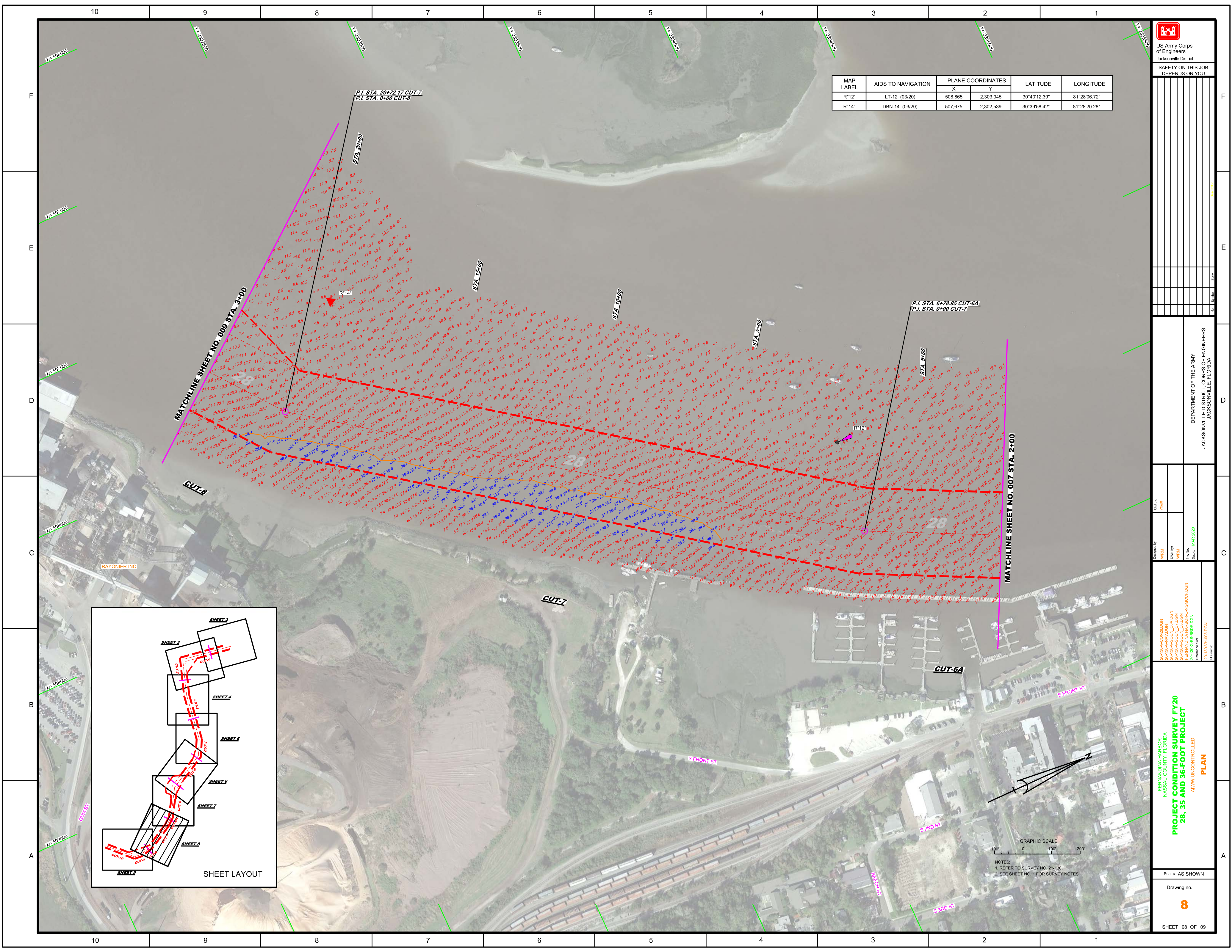
DEPARTMENT OF THE ARMY  
JACKSONVILLE DISTRICT, CORPS OF ENGINEERS  
JACKSONVILLE, FLORIDA

Drawn by: GHR  
Checked by: GHR

Designed by: WRM  
Checked by: WRM

Project: FERNANDINA HARBOR, NASSAU COUNTY, FLORIDA  
PROJECT CONDITION SURVEY FY20  
28, 35 AND 36-FOOT PROJECT  
STA. 28+00 CUT-5 THRU STA. 9+00 CUT-6  
PLAN

Scale: AS SHOWN  
Drawing no. 7  
SHEET 07 OF 09



MAP LABEL	AIDS TO NAVIGATION	PLANE COORDINATES		LATITUDE	LONGITUDE
		X	Y		
R"12"	LT-12 (03/20)	508.865	2,303.945	30°40'12.39"	81°28'06.72"
R"14"	DBN-14 (03/20)	507.675	2,302.539	30°39'58.42"	81°28'20.28"

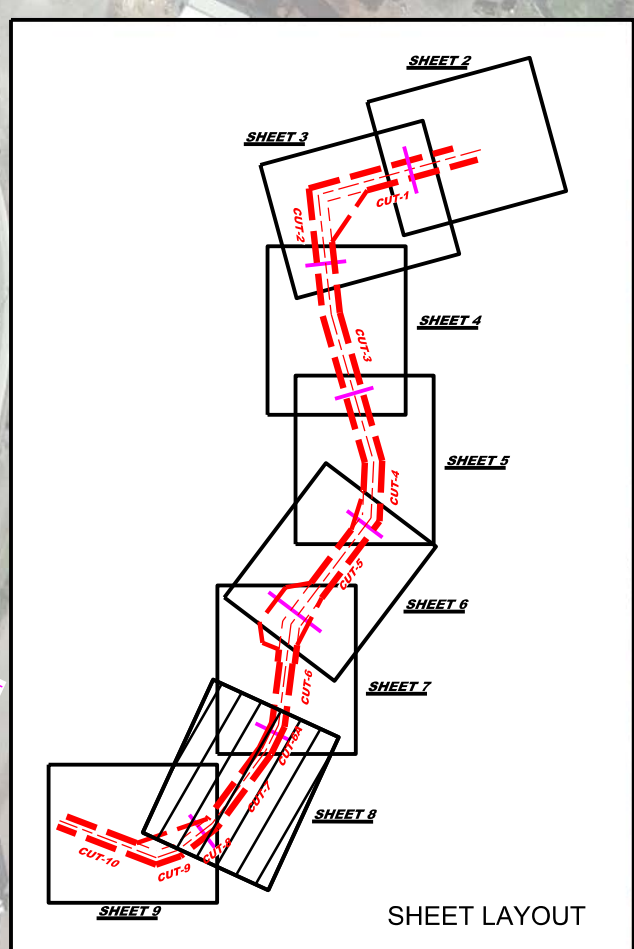
US Army Corps of Engineers  
Jacksonville District  
SAFETY ON THIS JOB  
DEPENDS ON YOU

DEPARTMENT OF THE ARMY  
JACKSONVILLE DISTRICT, CORPS OF ENGINEERS  
JACKSONVILLE, FLORIDA

Checked By: GHR  
Designed By: WRM  
Drawn By: WRM  
In Charge: WRM  
Date: MAR 2020

FERNANDINA HARBOR  
NASSAU COUNTY, FLORIDA  
PROJECT CONDITION SURVEY FY20  
28, 35 AND 36-FOOT PROJECT  
AWWW UNCONTROLLED  
PLAN

Scale: AS SHOWN  
Drawing No. 8  
SHEET 08 OF 09

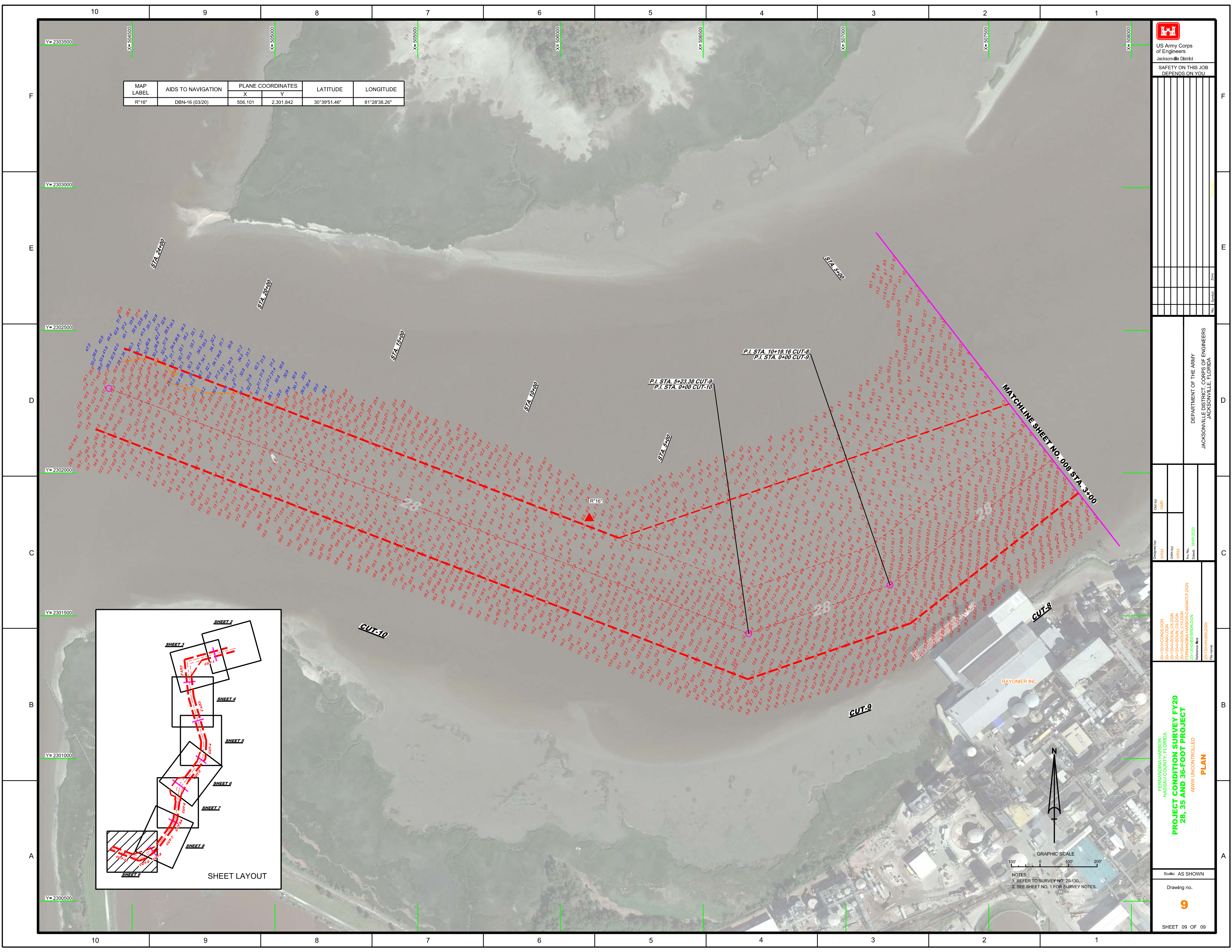
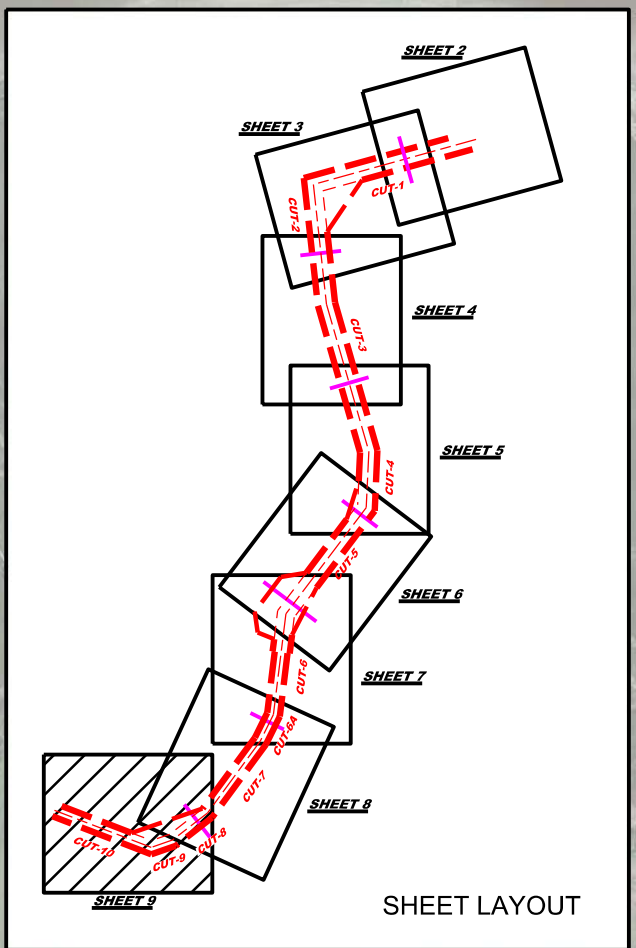


GRAPHIC SCALE  
1" = 100'  
1" = 200'  
NOTES:  
1. REFER TO SURVEY NO. 20-130.  
2. SEE SHEET NO. 1 FOR SURVEY NOTES.



MAP LABEL	AIDS TO NAVIGATION	PLANE COORDINATES		LATITUDE	LONGITUDE
		X	Y		
R"16"	DBN-16 (03/20)	506,101	2,301,842	30°39'51.46"	81°28'38.26"

MAP LABEL	AIDS TO NAVIGATION	PLANE COORDINATES		LATITUDE	LONGITUDE
		X	Y		
R"16"	DBN-16 (03/20)	506,101	2,301,842	30°39'51.46"	81°28'38.26"



GRAPHIC SCALE  
0 100' 200'  
NOTES:  
1. REFER TO SURVEY NO. 20-130.  
2. SEE SHEET NO. 1 FOR SURVEY NOTES.